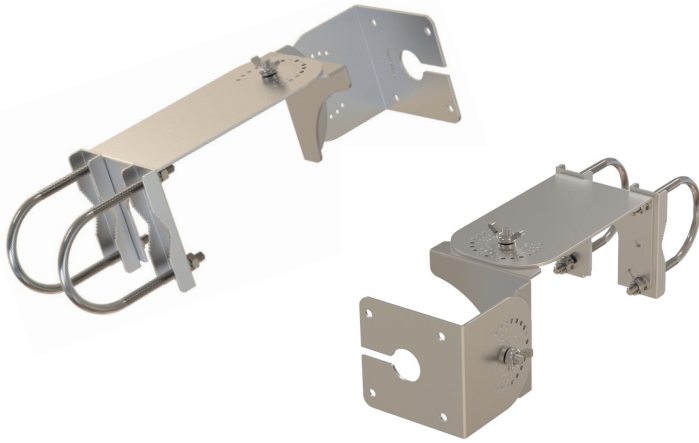




# LARGE PATCH ANTENNA ARTICULATING WALL/POLE MOUNT



The AccelTex Solutions articulating wall/pole mount for large patch antennas allows installers to articulate the antenna horizontally and vertically to cover a specified area. This heavy duty mount is suitable for a wall, ceiling or pole installation and with the inscribed degree markings, provides maximum and precise articulation for the antenna.

**Part Number: ATS-ARTMNT-LP**

## > MECHANICAL SPECIFICATIONS

---

Dimensions: 3" H x 3" W x 9" D (76mm H x 76mm W x 228.6mm D)

Weight: 1.5 lb (0.68 kg)

Installation: Wall/Pole Mount

Pole Mount Diameter: 2" (50mm)

Max Vertical Articulation  $\pm 75^\circ$

Max Horizontal Articulation:  $\pm 75^\circ$

## > ENVIRONMENTAL SPECIFICATIONS

Installation Environment: Indoor or Outdoor

Wind Velocity: 130 mph (210 km/h)

## > WARRANTY

1 Year Limited Warranty

## > COMPATIBILITY

---

Ships with the AccelTex Solutions Larger patch antennas.

## > INCLUDED HARDWARE

---

Includes U-bolts for pole mounting. Installer is required to provide any additional mounting/fastening hardware for other mounting situations (brick, concrete, sheetrock, etc.).