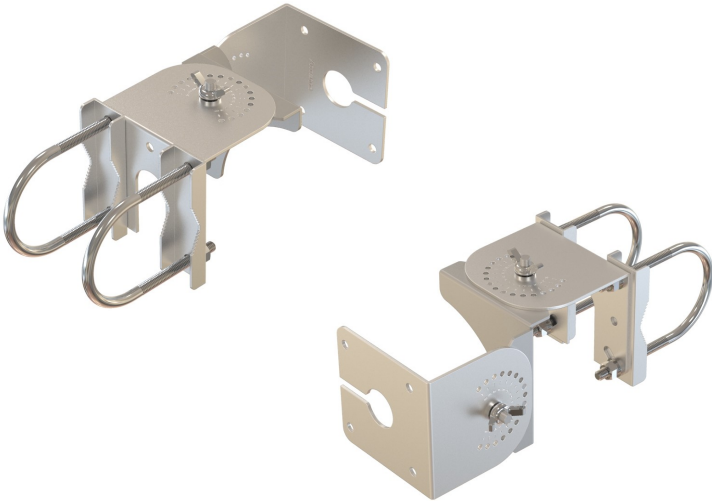




SMALL PATCH ANTENNA ARTICULATING WALL/POLE MOUNT



The AccelTex Solutions articulating wall/pole mount for small patch antennas allows installers to articulate the antenna horizontally and vertically to cover a specified area. This heavy duty mount is suitable for a wall, ceiling or pole installation and with the inscribed degree markings, provides maximum and precise articulation for the antenna.

Part Number: ATS-ARTMNT-SP

> MECHANICAL SPECIFICATIONS

Dimensions: 3" H x 3" W x 6" D (76mm H x 76mm W x 152.4mm D)

Weight: 1.3 lb (0.59 kg)

Installation: Wall/Pole Mount

Pole Mount Diameter: 2" (50mm)

Max Vertical Articulation $\pm 75^\circ$

Max Horizontal Articulation: $\pm 75^\circ$

> ENVIRONMENTAL SPECIFICATIONS

Installation Environment: Indoor or Outdoor

Wind Velocity: 130 mph (210 km/h)

> WARRANTY

1 Year Limited Warranty

> COMPATIBILITY

Ships with the AccelTex Solutions Smaller patch antennas.

> INCLUDED HARDWARE

Includes U-bolts for pole mounting. Installer is required to provide any additional mounting/fastening hardware for other mounting situations (brick, concrete, sheetrock, etc.).